

Wireless Tips

This page has some general tips for connecting to the wireless network along with some more detailed information for both Mac OS X and Windows XP.

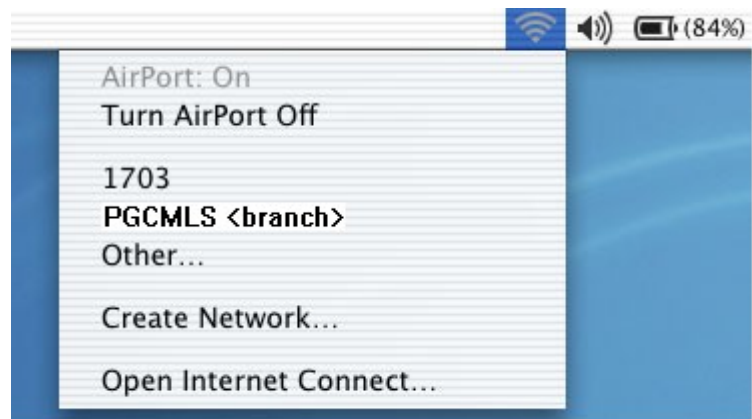
General Tips

- Other wireless networks may show as being available to your computer; make sure you select the one listed as **PGCMLS <branch name>**.
- Make sure your card is set for **Infrastructure (Access Point)** mode -- Ad Hoc mode won't work.
- Make sure WEP encryption is disabled.
- No password is required.
- Make sure your wireless card is configured to get its TCP/IP network settings automatically via DHCP
- Make sure that your computer has any relevant security and anti-virus updates installed **before** connecting.

There are a very large number of possible combinations of hardware, operating system and wireless card, the following instructions may well not fit your exact set up, but they may well give you enough hints to get things working on your system.

Mac OS X AirPort

The PGCMLS Public Library wireless network supports connections from Macs equipped with either an **AirPort** or **AirPort Extreme** card. If you are using OS 9 the process is very similar, though the screens look slightly different. Unless you are using an older Apple laptop with a 3rd party wireless network card, all the software and drivers you need to connect are built into the operating system.



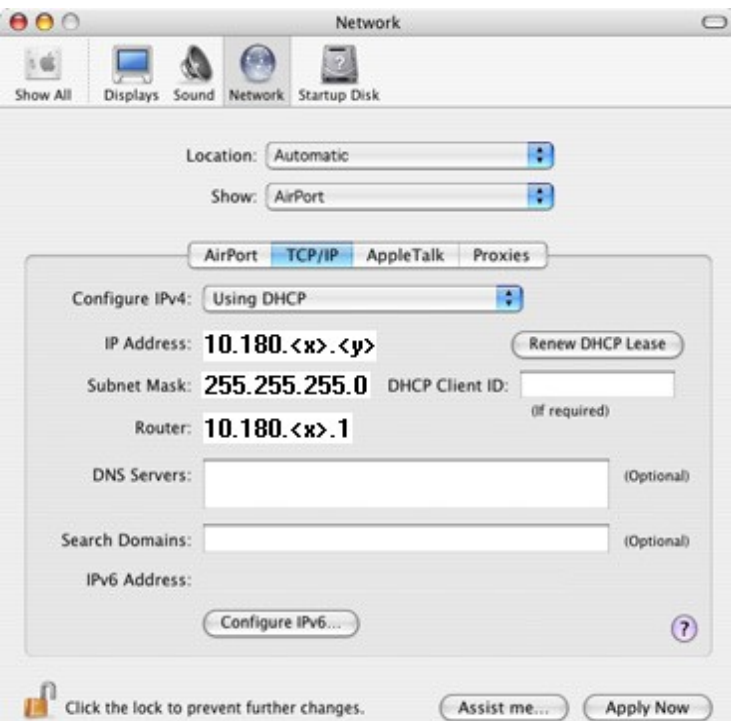
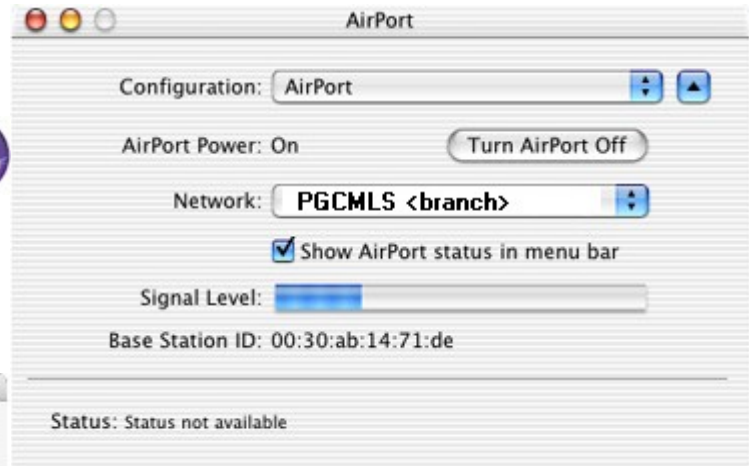
If the AirPort icon appears on the menu bar, click on it and choose **PGCMLS <branch name>** from the drop-down list. No password is required to join the network.

Usually that's all you need to do to connect - if you don't see the AirPort icon, or

if the network settings are not quite right see below.

PGCMLS <branch>

If there is no AirPort icon on the menu bar open the **Internet Connect** application: then select AirPort Configuration and make sure AirPort power is **On** and choose **PGCMLS <branch>** from the list of available networks.



If the AirPort connection seems to be OK, but you cannot get to any resources on the Internet check that the network settings are correct in the System Preferences Network panel. Select **AirPort**, then click configure. Chose the **TCP/IP** tab and make sure **Configure IPv4** is set to **Using DHCP**

Microsoft Windows XP

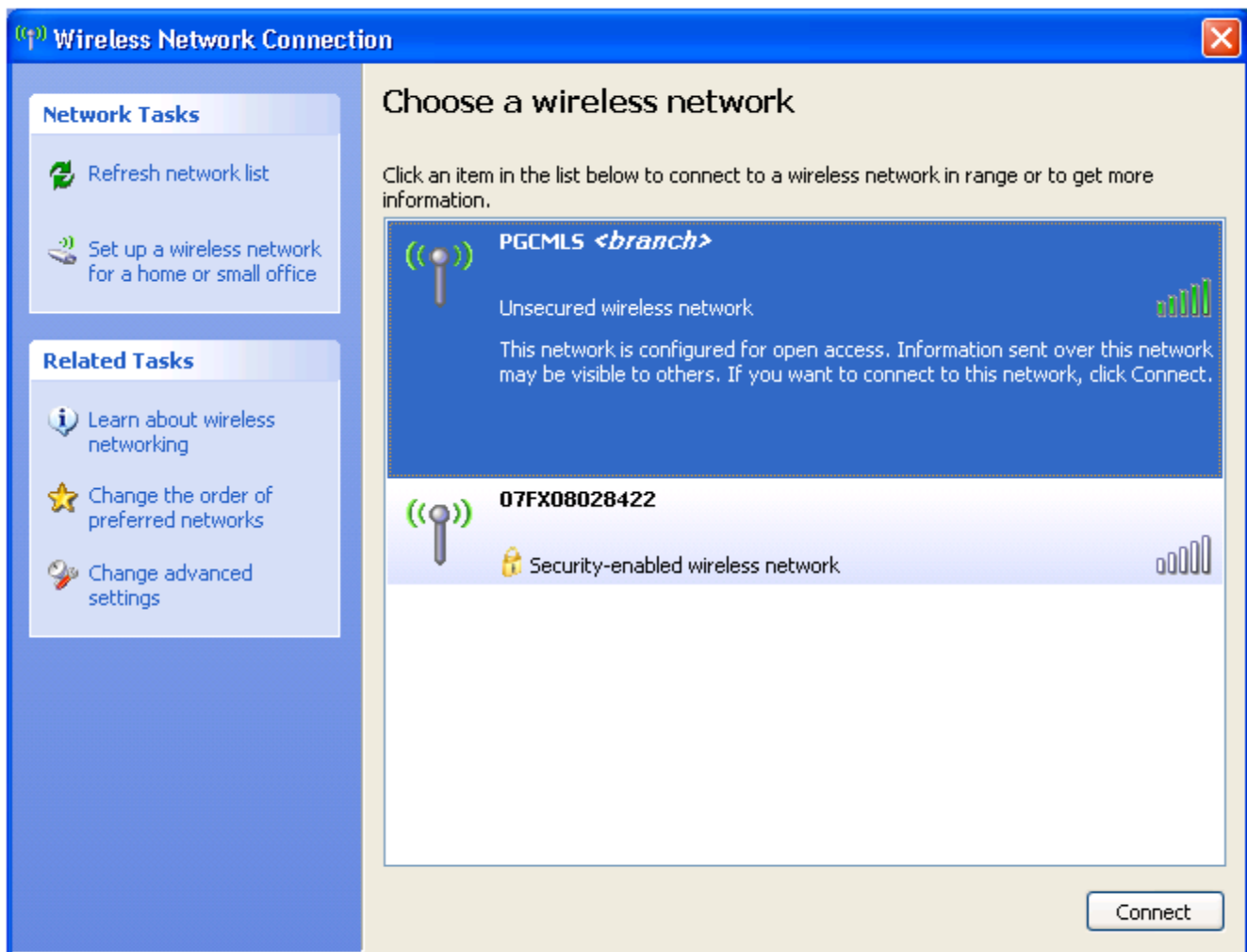
Pretty much any Wi-Fi compliant (802.11b or 802.11g) wireless network card should work with our system if it is set up correctly. It is important that the drivers and set up software are installed **before** you try to use the card. These are simple tips for using Microsoft Windows XP to set up the connection; some

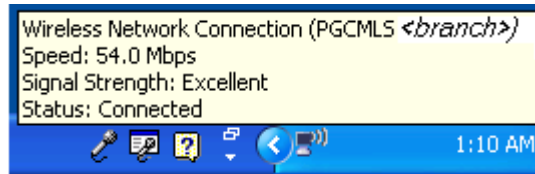
cards come with software that might provide a different interface for setting up your system to use the network, if that is the case you should consult the documentation that came with the software. Some cards have drivers for earlier versions of Windows, if the software for your card supports your system you should be able to use it on our network.

When you turn on your computer or insert the wireless card you should see a message by the start bar notifying you that a wireless network is available. Click on the message.



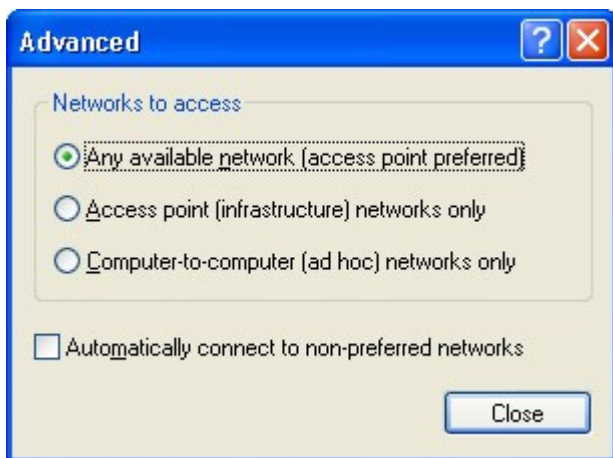
Make sure **PGCMLS <branch>** is highlighted (there may be additional networks that show up in the dialog box). Beneath the reminder that you are selecting an unencrypted connection is a check box allowing the connection; check the box and you should then be able to click connect to join the Network.



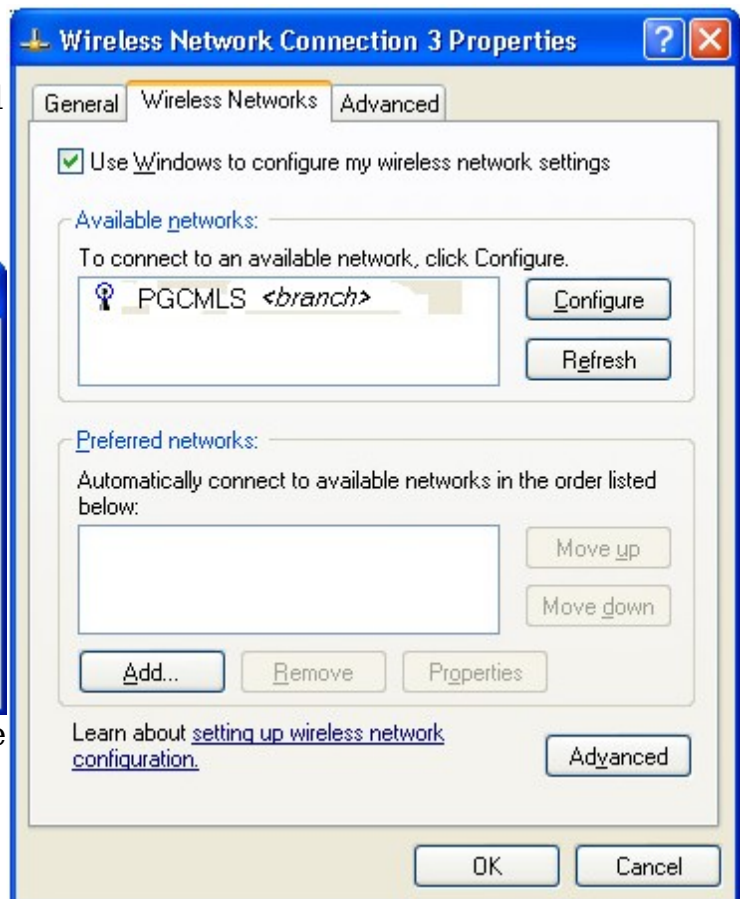


You should then see a message displayed by the start bar confirming that you have connected to the network. That should be it, but if you are having connection problems read on...

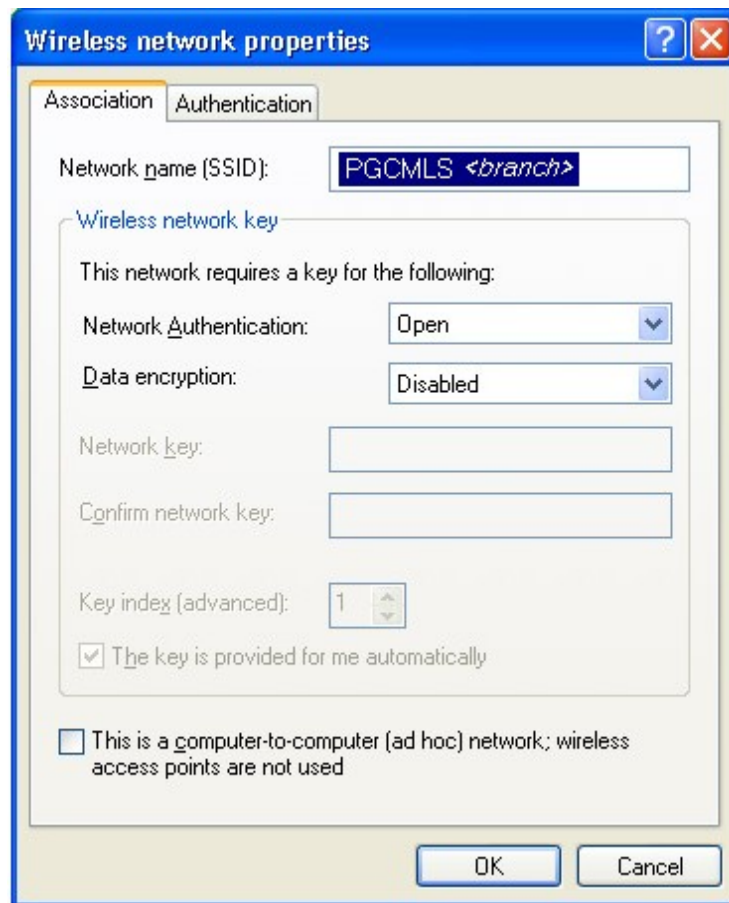
If you have problems connecting you should check the network settings by clicking on the advanced button in the available **Wireless Network Connection** dialog box



Click the advanced button and make sure **Networks to access** is set either to **Any** or **Access point**.



With **PGCMLS <branch>** highlighted click the **Configure** button and make sure **Network Authentication** is set to **Open** and **Data Encryption** is set to **Disabled**.



On the **General** tab of the main dialog box scroll down the list of items till you can see **TCP/IP**; select that item and click the **Properties** button.

Confirm that both **Obtain an IP address automatically** and **Obtain DNS server address automatically** are both selected. The configuration for the wireless card should now be correct for our network!

